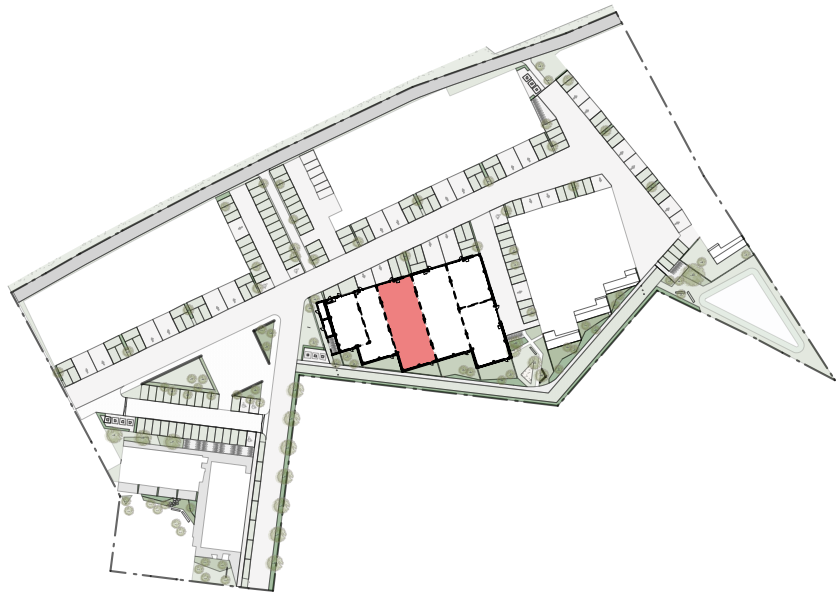


De Stip: Deerlijkse Steenweg - Harelbeke

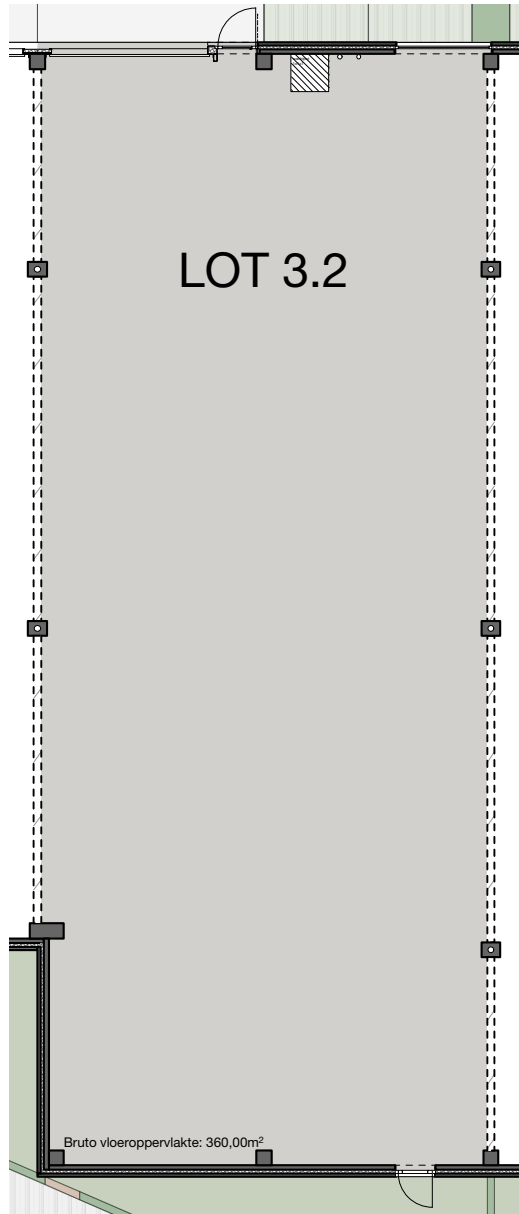
Aantal parkeerplaatsen voor lot 3.2: 2

Bruto vloeroppervlakte lot 3.2: 360 m²

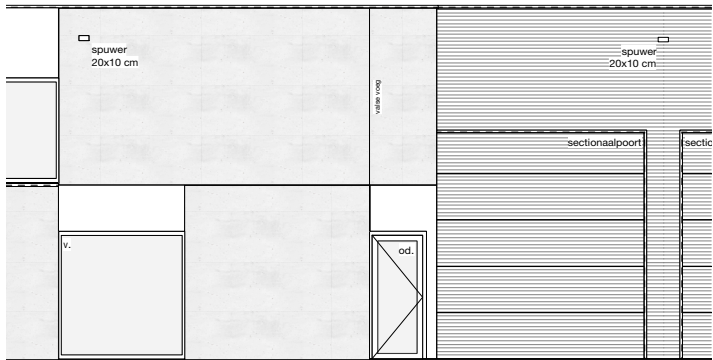
Netto vloeroppervlakte lot 3.2: 346 m²



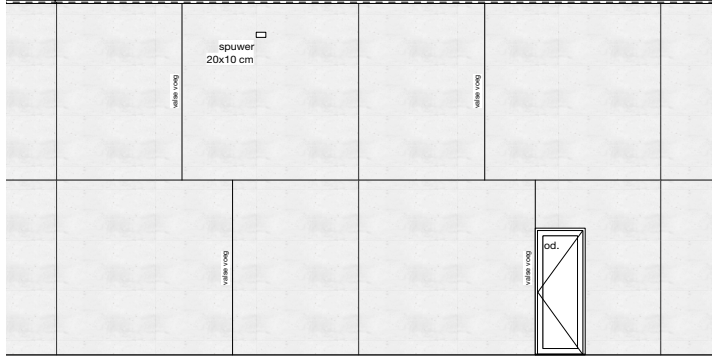
Inplantingsplan schaal 1:2500



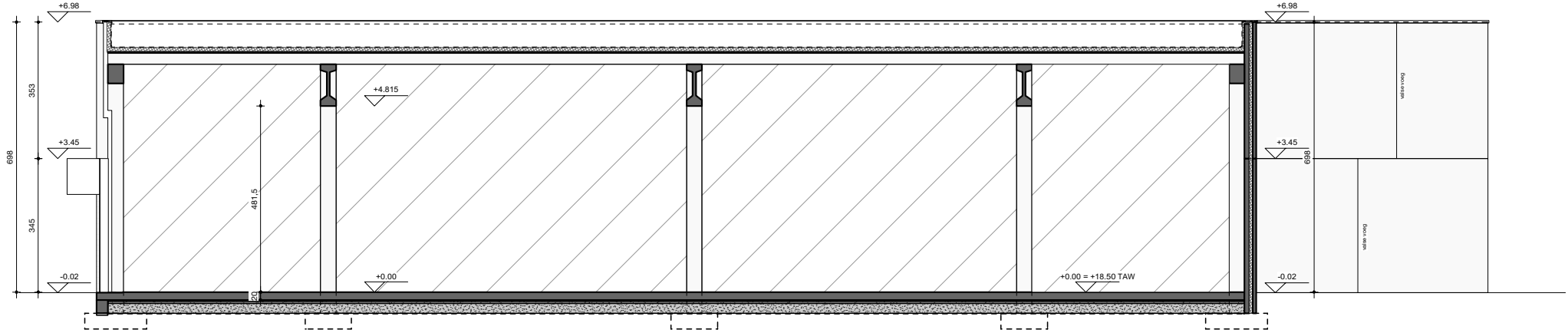
Grondplan schaal 1:200



Voorgevel schaal 1:150



Achtergevel schaal 1:150



Principesnede BB schaal 1:150